



## LOKELANI 'OHANA NEWSLETTER WINTER SOLSTICE 2010

2010 was filled with excitement and success operating our two life sharing homes, and serving the community with our Organic Gardening Farm Programs and Saori Weaving Creative Arts Program.



Early in the year Bernard Murphy, The Camphill Foundation President, visited us and worked with our board and project. Bernard's lifetime of experience supported our efforts entering into our strategic planning which was supported by a generous grant from The Hawaiian Community Foundation. Lokelani 'Ohana continues to be involved in legislative work co-sponsoring the 20th year celebration of the American Disabilities Act and the Maui County Disability Alliance Legislative Forum.

**Our Mission** is to create socially therapeutic programs within our community with elements of native Hawaiian Culture and tradition for adults with developmental disabilities

**Our Vision** statement reads: We are a vibrant and sustainable 'Ohana where people with developmental disabilities live, learn and work together with reverence for spirit, creativity and nature, supporting each others potential and sharing a life of purpose.

### Special Points of Interest:

**Lokelani 'Ohana** invited to present at NAC Conference in New York

**Atherton Foundation Grant** provides cotton gin and sewing machine for Saori Weaving & Creative Arts Program

**Lokelani Ohana** receives lead gift for 1.6 million dollar capitol fund drive to expand Residential and Day Programs.

**Kris Kristofferson** gifts Lokelani 'Ohana with a concert at the MACC. Join us in Celebrati on June 4<sup>th</sup> 2011.



Lokelani 'Ohana is honored by Kris Kristofferson sharing his music on Saturday June 4th at the MACC. Kris is helping to illuminate the housing crisis for people with developmental disabilities by raising funds with this concert. The goal of our capital campaign is to raise 1.6 million dollars, giving us the means to provide more housing and day programs. See our work at [www.lokelaniohana.org](http://www.lokelaniohana.org) and donate today! Mahalo!



Kris Kristofferson

**Lokelani 'Ohana attends The North American Council for Social and Therapeutic Studies annual meeting, visits with friends at Spring Valley and various Camphill Communities.**



Members of Lokelani 'Ohana traveled to **Triform Camphill Community**, a living community offering residential and day programs to young adults with special needs. Lokelani 'Ohana was in attendance for the annual conference of the **North American Council for Curative Education and Social Therapy (NAC)**

[www.triform.org](http://www.triform.org)

The NAC is a membership organization comprised of anthroposophic schools, life-sharing households and communities and other related endeavors, and forms a link to the Curative Education and Social Therapy Council of the Medical Section at the Goetheanum, the world's center for anthroposophy in Switzerland.

Lokelani 'Ohana was invited to present its work at the conference. Everyone there was enthusiastic to come from all corners of North America and Canada and share with each other about their lives. Jaimen Mcmillan lead the group in special dynamics exercises, see: [www.spacialdynamics.com](http://www.spacialdynamics.com).

Fabulous workshops were offered on everything from new initiatives in India to medicine, education and farming. We attended a workshop on the Handle method, a body of work developed for people with autism. See: "The Fabric of Autism" by Judith Bluestone [www.handle.org](http://www.handle.org)

Our mainland journey included a visit to the **Fellowship Community** in Spring Valley, New York, which is the most remarkable conscious community we had seen centered around care for the elderly [www.fellowshipcommunity.org](http://www.fellowshipcommunity.org)



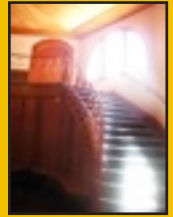
**The Pfeiffer Center** in Chestnut Ridge NY offers one-year trainings, internships, workshops and events in biodynamic and other organic farming methods. Mac Mead, program director, gave us a tour of the facility and farm with the greenhouses, beehives, soil testing rooms, and various types of compost. Anyone interested in the earth and agricultural will be enriched to know what this center has to offer, see [www.pfeiffercenter.org](http://www.pfeiffercenter.org)

We always love visiting **Camphill Copake**, the first community to be developed in North America based on life sharing principals. Our group of four also loved visiting friends at **Heartbeet** in Vermont, and **Beaver Run, Beaver Hill, Soltane and Kimberton Hills** in Pennsylvania.



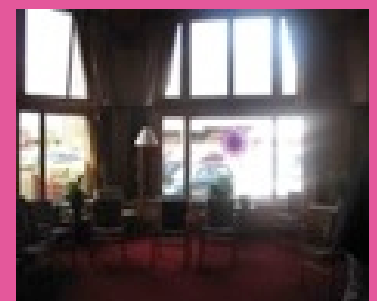
Lokelani 'Ohana is excited and grateful to have been included in the presentation describing the evolution of Camphill inspired communities in North America, featured in Lilipoh's publication on Social Renewal, special edition: Celebrating 50 years of Camphill in North America. [www.lilipoh.com](http://www.lilipoh.com)

**The Sunbridge College Bookstore**



**Fellowship Community**

*The Fellowship Community*, founded in 1966, is a community of all ages, centered on the care of the elderly. About 150 elderly, children and coworkers live in a rural setting of farm, woods and orchards about 30 miles north-west of New York City. Working and learning together in service to others and in caring for the earth is the central motif of the community life.





## Lokelani 'Ohana Waihe'e Life Sharing Farm Community Experiences a Fulfilling Year

Waihe'e Farm Completes clearing the land, eradicates fire ant, supports life for family, wwoofers, friends, visitors and organic farming program for those with special needs.



Lokelani 'Ohana gratefully continues to work with the USDA for new contracts after clearing the remaining cane and haole koa from the old Hawaiian farmland. It had been 25 years since the land was completely cleared and it welcomed renewal. The ground cover of buckwheat has been planted with the fresh winter rains bringing life.



The Lokelani 'Ohana Waihe'e Farm sponsored a biodynamic Agriculture workshop in July learning about preps and creating a barrel compost pit. **See:**

[www.lokelaniohana.org/media/f51793738a30c64efffd97ffffe415.pdf](http://www.lokelaniohana.org/media/f51793738a30c64efffd97ffffe415.pdf)

Our farm crew use the BD preps on a regular basis so the life forces of the earth become vibrant and vital.

The Lokelani 'Ohana Farm has barrel pit prep for sale for \$5 for two ounces which easily covers one acre



The programs that are run at the Waihe'e site include a life sharing home, a wwoofing program, farming for sustainability and a gardening program for people with special needs. The life sharing home work supports self determination and independence living together with people with special needs. The social life is therapeutic in nature with the farm and community working together as a whole, each respecting the individual and serving a larger purpose at the same time.



There was a fire ant reported on Maui this year.

[www.littlefireants.com](http://www.littlefireants.com)

The Maui News printed an article

[www.mauinews.com/page/content\\_detail/id/528585.html?nav=10](http://www.mauinews.com/page/content_detail/id/528585.html?nav=10)

The Lokelani 'Ohana Waihe'e Farm was first to report the fire ant on Maui and the first site in Hawaii to successfully eradicate the fire ant. We do not know where the ant came from. as we researched the ant we discovered how destructive it can be. Scientist Cas Vanderwoude from the Department of Agriculture said it is one of the worst ants on the planet and we worked with him for one year with monthly treatments. Maui County, The Department for invasive species, U of H, and the USDA all supported the eradication.

It will be three years before the area treated, being one third of the farm, will return to organic status. We will implement a greenhouse, aquaponic and hydroponic practices in the treated areas to restore our organic status. We are grateful to all who contributed in helping clear out the fire ant from our aina (land) and preventing it from spreading to our beloved Maui.



Let's Go to  
Down to Earth!



Love



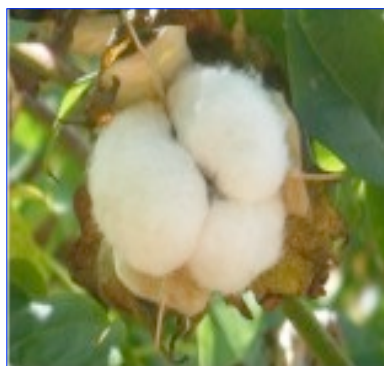
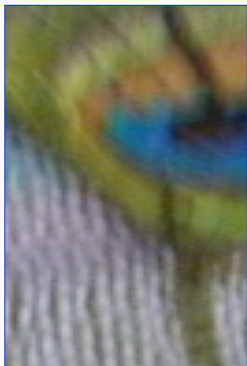
Hope



Faith



There is a beautiful tapestry of activities from the farm to the weaving & creative arts program and with the community.

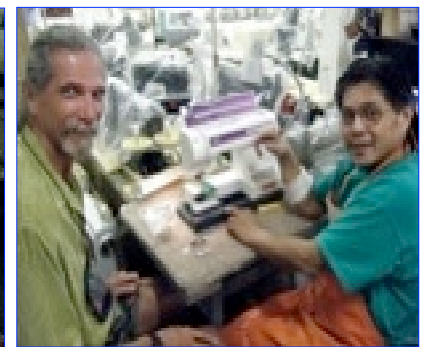


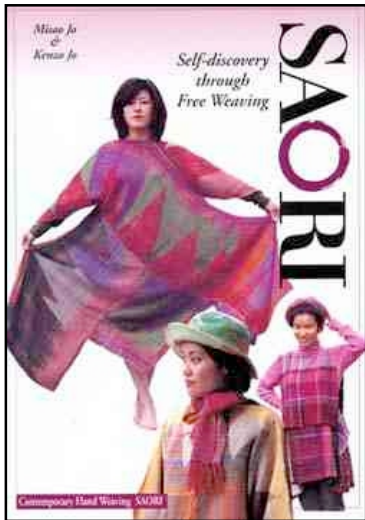
Brian, Gwen & Alice love to gin cotton



Participants plant the cotton and other materials that they use in their weaving and arts program. They are so excited to gin their cotton and make pillows and other items. One participant is even with help, sewing a teddy bear for a friend and is stuffing it with the cotton he planted, cared for, picked and ginned. We are all grateful to the **Atherton Foundation** for the gift of the cotton gin and sewing machine that opened up worlds of opportunity for all of our clients. We would also like to thank **Ceramic Tile Plus** for the donation of granite and other tiles for the weaving and art program. In India and other parts of the world, people roll the cotton on a piece of granite with a metal or wooden roller to push out the seed.

Farm members and participants are excited harvesting vegetables, herbs, flowers and fruits to enjoy. We make weekly deliveries to Down to Earth giving everyone involved the opportunity to develop life and social skills.





## Lokelani 'Ohana's Saori Weaving & Creative Arts Program

The Saori Weaving & Creative Arts Program is entering its 4th year of service to participants at Ka Lima 'O Maui and Easter Seals.



Roxanne of Easter Seals, pictured in the upper right hand corner, is proud of the beautiful pillow she wove and filled with cotton she grew at the Waihe'e Farm. Roxanne sold her pillow at the ESH Art Fair.

Participants from both Medicaid Waiver agencies expanded their creative talents with making bags, Christmas decorations creations, shawls, hair and hat bands, pillows & weavings onto clothes. Self knowledge through creative expression and teamwork are key benefits to our arts program.

2010 has been another exciting year for our Saori Weaving and Creative Arts Program. Abundance has flowed in the form of gifts. We received a dome structure that we plan to use as a weaving studio. A large rug loom was also given that will expand the projects that we can make and sell. The Atherton Foundation gifted us with a cotton gin and sewing machine that greatly enhances the program.



Dana was in Massachusetts in May where he attended workshops on Saori weaving. The Saori Bridges of Elm Park Banner Project asked Saori sites to donate banners auctioned for The Children at Risk Program. Dana is pictured at right with the weaving Lokelani 'Ohana donated to the Bridge Project.



## Camphill Copake Weavery New York



Dana attended an international Saori Weaving conference in Japan where Kenzo Jo, the son of founder Misao Jo, taught him new weaving techniques. Other workshops focused on networking between directors of Saori weaving programs, sharing information and problem solving.

Barbara Torrence has volunteered in the weaving program for three years and is loved by all. We have a wonderful new volunteer and welcome others to participate. Mahalo to everyone who made this program a success. Dana Allen, Saori Weaving Program Director.

## Lokelani 'Ohana Weaving Program at Ka Lima 'O Maui





## LOKELANI MAKAWAO

Aloha and Welcome to Lokelani 'Ohana's Life Sharing Home and Industry Project located in Makawao, Maui, Hawaii.



Chris & Tony bring a hardened variety of Camellia Sinensis from Lokelani Makawao to plant on the Lokelani Waihee Farm. We have hopes this variety will be a producer of white tea at lower elevations. Five more plants have been trial planted at the 1850 ft. elevation of Lokelani Makawao.

*"Our highest endeavor must be to develop free human beings who are able of themselves to impart purpose and direction to their lives."*

*(Rudolph Steiner)*

Tony and Chris Leone share their lives in community with Michael and Sabrina Leone on a half acre of fertile land in a Makawao neighborhood.

The vocational focus is on sustainable green energy development, agriculture and a home business serving tourism.

The transformation of the Makawao site has been remarkable in the last year, adding a new patio, lava rock retainer wall, an arboretum, container tomatoes, grapevines, Lokelani roses, Camellia tea plants and Surinam cherries.

A quality of life for all is valued at home and in the community supporting self determination, independence and enjoyable relations with others and life on the beautiful island of Maui.

Work is currently underway for the construction of a new laboratory for the investigation and pursuit of chemical distillations of components of seeds, herbs, plants and flowers. It is hopeful that preparations will be used for beneficial nutritional and medicinal purpose.

Tony and Chris have been working with Camp IMUA, a summer camp for people with special needs and with Special Olympics for 33 years. They donate their time to the world famous "Maui Film Festival" and Tony is chair for the Land Development Committee for Lokelani 'Ohana!"

Tomatoes line the new Lava Rock retainer wall & patio.



Surinam Cherries put a smile on Chris' face as he fills his box from one of the 22 trees growing at Lokelani 'Ohana Makawao



"Love Starts when we push our ego aside and make room for someone else"  
(Rudolph Steiner)

## Surinam Cherries

"Ripe & Ready, Tart & Tasty"



## Lokelani 'Ohana co-sponsors American Disabilities Act 20th Year



Regarding disabilities-related anniversaries and events, the Maui Disability Alliance celebrated the 20th anniversary of the Americans with Disabilities Act (ADA) on July 26 at Cameron Center. The ADA is one of the most comprehensive civil rights laws prohibiting discrimination on the basis of physical or mental disability. The act was established to promote equal opportunities in all aspects of daily activity for people living with disabilities.

### Lokelani 'Ohana is one of many agencies co-sponsoring The 15th Annual Maui Disability Alliance Legislative Forum



**Josh Rowe presents on vocational issues to our legislators and community members.**

On Aug. 18, more than 240 people attended Maui Disability Alliance's 15th annual Legislative Forum. A 16-person panel of consumers and providers examined issues in the areas of transportation; education; adult mental health; veterans; employment; developmental disabled/mental retardation waiver service; housing; homeless; family support, and health. Packets with position papers on each topic were given to participants along with a services resource directory. Attendees met and heard from state and county legislators and 30 candidates. More than 20 Maui agencies collaborated to sponsor this event, where awards and commendations were presented

to Maui individuals and companies that have embraced employment of the disabled.



**Senator Roz Baker is honored for her work with people of special need.**

Lokelani 'Ohana members Aaron Kemp, Aimee Bellard, Sean Maher, Ann Maher, Lena Kama and Christina Chang presented on the housing crisis in Maui County and especially for those in wheel chairs with developmental disabilities, and for people with mental health needs.

**Maui County Developmental Disabilities Committee** 54 High Street, 3rd Floor Wailuku, HI 96793 Phone: 984-8218 Fax: 984-8284  
[mauimatsu@yahoo.com](mailto:mauimatsu@yahoo.com)  
<http://www.hiddc.org/maui.htm>

**Bernard Murphy, Camphill Foundation President, attends DD meeting of Maui County in February 2010**



**AS FAMILY CAREGIVERS AGE THERE IS A GREATER NEED FOR RESIDENTIAL SETTINGS. 29.7 OF THE POPULATION IN HAWAII IS 60 OR OLDER AND OUT OF THE 270 CLIENTS THAT ARE BEING SERVED 220 LIVE AT HOME WITH THEIR AGING PARENTS. 168 OF THE 270 CLIENTS SERVED ARE AGE 21 OR OLDER!**

**OUR SPECIAL NEEDS COMMUNITY NEEDS HOUSING OPTIONS!**

We heartfully thank  
all of our donors this  
year for their support.



The Atherton  
Foundation

Maui Hotel  
and Lodging  
Association

Margaret  
Evans Tuten  
Foundation

The USDA  
NRCS

The Hawaii  
Community  
Foundation

Ceramic Tile  
Plus

The Kent and  
Polli Smith  
Foundation

Luc LaBrosse  
Construction

Z.S. Quality  
Services



WE HONOR JEAN FLOOD MD, PICTURED  
ON THE RIGHT TALKING WITH ANGELICA  
CHANG, AT CAMPHILL VILLAGE KIMBERTON  
HILLS IN PENNSYLVANIA

JEAN IS A LONG TIME FRIEND AND SUPPORTER OF  
LOKELANI 'OHANA AND BECAME THE LEAD GIFT  
DONOR FOR OUR 1.6 MILLION DOLLAR CAPITAL  
FUND DRIVE CAMPAIGN FOR RESIDENTIAL AND  
DAY PROGRAMS. MAHALO NUI LOA JEAN!  
PLEASE TAKE STEPS FORWARD WITH US AND  
DONATE NOW TO OUR PROGRAMS!

**LOKELANI 'OHANA**

2315 KAHEKILI HWY WAILUKU, HAWAII 96793  
808-249-0254 [WWW.LOKELANIOHANA.ORG](http://WWW.LOKELANIOHANA.ORG)



**MAHALO NUI LOA TO ALL OUR DONORS THIS YEAR:**

imagine

LOVING  
REVERENCE  
FULFILLING  
SAFE  
SELF  
DETERMINED  
ENRICHING  
CREATIVE  
JOYFUL  
HOMES  
& PROGRAMS

Albie Neilson  
Marceline Olson  
Kyra Denise Kendall  
Harridene Chang  
Martha Ingalls Little  
Vaness Dacanay  
Pierce Gray  
Jerry Schwartz  
Paul and Gerlinde Morris  
Tails Oceanheart  
Bernard & Szvilia Murphy  
Leon Wheeler  
J Westhead  
Joanne McCready  
Natessa Leanna  
Sandra I. Swarbrick  
Ruth Liberatore  
Angela Vanderwal  
Michael Munekiyo  
Henry Langi  
Bob and Iris Chapman

Tara Sabado  
Shellby Crandall  
Tony and Chris Leone  
Frank Montano  
Linda Master  
Marcia Godinez  
Paul and Anella Mark  
Mitch and Lisa Kemp  
Barbara Torrence  
Chris & Leslie Jones  
Christina & Angelica Chang  
Martha & Olaf & Glenora Farm  
Art & Cheryl Takabayashi  
Ming Shipp & Gemini Sailing Charter  
Joan Bellard  
Cathy Pellazar  
Dana Allen  
Bobby Pahia  
Cordell Chang  
Paul Maloney  
Kate Campise  
Nancy Markstein  
Tasha Kama  
The Swarbricks



Aaron Kemp speaks about housing needs at the  
Maui Disability Alliance Legislative Forum